

School District of Manawa

Special Board of Education Agenda - **AMENDED**

March 26, 2019

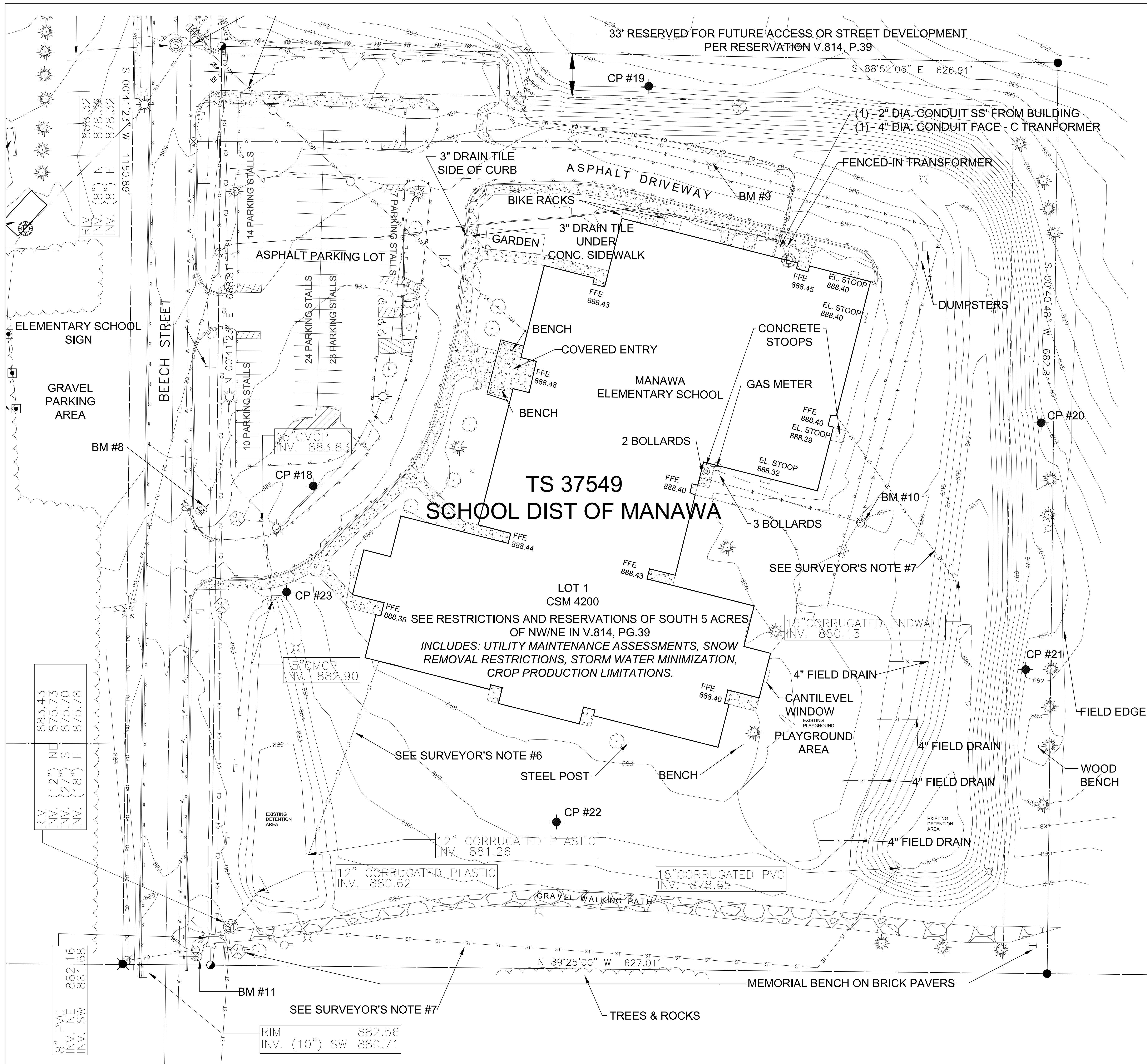


1. Call to Order – President Johnson – **5:30 p.m.** – **LWJR./SR.HS - COMMONS**
2. Pledge of Allegiance
3. Roll Call
4. Verify Publication of Meeting
5. New Business:
 - a. Hoffman Planning, Design & Construction, Inc. - Progress Update by Jody Andres
 - i. Review of Focus Group Project Revisions and Updates
 - ii. Consider Approval of the Elevator Bid as Presented
 - iii. Consider Approval of Bid Package #1 for the Elementary School Site Work as Presented
 - iv. Board Questions
6. Next Meeting Dates:
 - a. Mar. 26, 2019 - Referendum Informational Session - 7:00 p.m. - LWHS Commons
 - b. Mar. 28, 2019 – Policy & Human Resources Comm Meeting 6:00 p.m.- MES Board Room
 - c. April 1, 2019 – Snow Removal Bid Opening – 2:30 p.m. – MES Board Room
 - d. April 1, 2019 - School Safety Meeting - 6:00 p.m. - MES Board Room
 - e. April 2, 2019 – Policy & HR – NEOLA Updates – 5:00 p.m. – MES Board Room
 - f. April 5, 2019 - Canvass Election Returns - 9:00 a.m. (Scheller)
 - g. April 9, 2019 - Curriculum Committee Mtg - 4:30 p.m. - MES Board Room
 - h. April 9, 2019 - Special BOE Mtg - Hoffman Update - 5:30 p.m. - MES Board Room (Includes approval of Summer School 2019 Booklet)
 - i. April 10, 2019 – Buildings & Grounds Committee Mtg – 5:30 p.m. – MES Board Room
 - j. April 16, 2019 – Finance Committee Mtg – 5:00 p.m. – MES Board Room
 - k. April 29, 2019 – Regular BOE Mtg – Reorganization - 7:00 p.m. – MES Board Room
7. Adjourn

PLEASE NOTE: Any person with a qualifying disability under the Americans with Disabilities Act that requires the meeting or material to be in accessible format, please contact the District Administrator to request reasonable accommodation. The meeting room is wheelchair accessible.

BIDDER INFORMATION			
COMPANY	Otis Elevator Company	Braum Thyssen Krupp Elevator	Schindler Elevator Corp.
CONTACT	Rob Fett	Floyd Ermis	Julie Furrer-Powell
ADDRESS	2247 Progress Way	2829 Royal Ave	1906 Wright St
CITY	Kaukauna	Madison	Madison
STATE	WI	WI	WI
ZIP	54130	53713	53704
PHONE	920-766-2900	608-268-3225	608-237-5702
FAX	860-353-4386	608-221-4475	608-237-5715
MOBILE	920-810-4835	-	-
EMAIL	robert.fett@otis.com	fermis@braun-corp.com	julie.furrer@schindler.com
BASE BID	\$84,822.00	\$87,900.00	\$88,000.00
BOND	\$765.00	\$0.00	\$500.00
TAX AMOUNT	\$0.00	\$0.00	\$0.00

COST SUMMARY			
BASE BID	\$84,822.00	\$87,900.00	\$88,000.00
ALTERNATES		-\$1,100.00	
QUALIFICATION			
OTHER COST			
TAX	\$0.00	\$0.00	\$0.00
BOND	\$765.00	Verify Bond Amount	\$500.00
CONTRACT TOTAL	\$85,587.00	\$86,800.00	\$88,500.00



LEGEND

- LIGHT POLE
- POWER POLE
- GUY
- TELEPHONE PEDESTAL
- ELECTRICAL BOX
- TELEPHONE MANHOLE
- SANITARY MANHOLE
- WATER MANHOLE
- STORM MANHOLE
- UTILITY MANHOLE
- TRACK DRAINS
- CATCH BASIN
- CATCH BASIN
- WATER VALVE
- HYDRANT
- FENCE
- POWER OVERHEAD
- BURIED ELECTRIC
- BURIED GAS
- BURIED TELEPHONE
- WATERMAIN
- FIBER OPTICS
- EDGE OF BITUMINOUS
- FLAG POLE
- TREE
- CONIFEROUS TREE
- BUSH/SHRUB
- ELECTRIC METER
- GAS METER
- GAS VALVE
- 3/4" IRON BAR FOUND
- 1" IRON PIPE FOUND
- 1 1/4" IRON PIPE FOUND
- 1 1/2" IRON PIPE FOUND
- 2" IRON PIPE FOUND
- SECTION CORNER FOUND
- SANITARY SEWER
- STORM SEWER
- CONTOUR LINE
- SPOT ELEVATION
- SIGN
- CONTROL POINT
- ELECTRIC OUTLETS
- DISC GOLF BASKET
- PLAY EQUIPMENT
- BOLLARD (UNLESS NOTED)
- BENCH
- ROCKS
- SANITARY CLEANOUT
- BASKETBALL HOOP
- SWING
- IRRIGATION BOX
- WOODLINE
- CONCRETE SURFACE

SURVEYOR'S NOTES

1. 3" WATER MAIN, 6" SANITARY AND 12" STORM PER ELEMENTARY SITE PLAN DRAWING A-1 FROM THEO UTSHIG & SON DATED JANUARY 30, 1973.
2. NATURAL GAS PER BRAY ASSOCIATES DRAWING SP1 PROJECT #2029 DATED MARCH 29, 1995.
3. STORM LATERAL PER BRAY ASSOCIATES DRAWING SP4 PROJECT #2029 DATED MARCH 29, 1995.
4. 6" WATER MAIN PER BRAY ASSOCIATES DRAWING SP2 PROJECT #2029 DATED MARCH 29, 1995.
5. 6" SANITARY STUBBED AND CAPPED. RUNS SOUTHEAST THROUGH THREE SEPTIC CLEANOUTS, WHICH ARE EACH COVERED BY A SOLID MANHOLE COVER ON ASPHALT SURFACE.
6. 12" STORM SEWER PER BRAY ASSOCIATES DRAWING SP2 PROJECT #2028 DATED OCTOBER 30, 1995.
7. 18" STORM SEWER PER R.H. RETTLER & ASSOCIATES, INC. DRAWING ST-1, DATED SEPTEMBER 10, 1998.
8. 6" SANITARY SEWER BASED FROM PLOT PLAN BY LAWRENCE BRAY & ASSOCIATES, JOB NO. 225, SHEET NO. P-1, DATED MARCH 28, 1968.
9. CURRENT H.S. BUILDING, SANITARY AND WATER SERVICES TO BUILDING NOT LOCATED IN FIELD OR SHOWN ON AVAILABLE MAPPING. PREVIOUS H.S. BUILDING, ELECTRIC AND SANITARY SERVICES TO BUILDING NOT LOCATED IN FIELD OR SHOWN ON AVAILABLE MAPPING.
10. PROPOSED 10" STORM SEWER PER BRAY ASSOCIATES DRAWING SP4 PROJECT #2029 DATED MARCH 29, 1995.
11. PROPOSED 8" STORM SEWER PER BRAY ASSOCIATES DRAWING SP4 PROJECT #2029 DATED MARCH 29, 1995.
12. TWO 1" ELECTRICAL LINES UNDER BLACKTOP FOR FUTURE PER BRAY ASSOCIATES DRAWING SP4 PROJECT #2029 DATED MARCH 29, 1995.
13. TWO 1" AND ONE 3" CONDUIT STUBBED PAST BLACKTOP FOR FUTURE TELEPHONE AND LIGHTING PER BRAY ASSOCIATES DRAWING SP4 PROJECT #2029 DATED MARCH 29, 1995.
14. ABANDONED 4" ELECTRICAL LINE PER BRAY ASSOCIATES DRAWING SP4 PROJECT #2029 DATED MARCH 29, 1995.
15. 8" ROOF DRAIN, ACCORDING TO BRAY ASSOCIATES DRAWING SP4 PROJECT #2029 DATED MARCH 29, 1995.
16. 8" X 12" X 12" FITTING WAS TO BE PROVIDED TO CONNECT FROM 12" STORM SEWER TO 8" ROOF DRAIN.
17. ONE 2" CONDUIT STUBBED PAST BLACKTOP FOR FUTURE CATV OR TELEPHONE PER BRAY ASSOCIATES DRAWING SP4 PROJECT #2029 DATED MARCH 29, 1995.
18. EXISTING 15" STORM SEWER PER BRAY ASSOCIATES DRAWING P1 PROJECT #2027 DATED APRIL 1, 1995. SHOWN ON PER PLOT PLAN BY LAWRENCE BRAY & ASSOCIATES, JOB NO. 225, SHEET NO. P-1, DATED MARCH 28, 1968.
19. EXISTING 6" SANITARY SEWER PER BRAY ASSOCIATES DRAWING P1 PROJECT #2027 DATED APRIL 1, 1995. STRUCTURE SHOWN ON PLANS NOT LOCATED IN FIELD.
20. 10" STORM LATERAL PER PLOT PLAN BY LAWRENCE BRAY & ASSOCIATES, JOB NO. 225, SHEET NO. P-1, DATED MARCH 28, 1968.
21. 4" WATERMAIN SERVICE PER PLOT PLAN BY LAWRENCE BRAY & ASSOCIATES, JOB NO. 225, SHEET NO. P-1, DATED MARCH 28, 1968.

SURVEY CONTROL POINTS

COORDINATE SYSTEM BASED ON: NAD83 (2011) WITH WAUPACA COUNTY COORDINATES USING WISCORS

CP #	CP #	CP #	CP #	CP #
CP #8 - CP SPIKE	CP #11 - CP SPIKE	CP #15 - CP SPIKE	CP #18 - CP SPIKE	CP #21 - CP SPIKE
N: 379180.313	N: 378994.460	N: 378714.600	N: 378390.120	N: 378252.479
E: 581707.843	E: 582235.684	E: 581736.206	E: 582797.579	E: 583331.659
Z: 885.026	Z: 888.820	Z: 875.117	Z: 885.679	Z: 891.878
CP #9 - CP SPIKE	CP #12 - CP SPIKE	CP #16 - CP SPIKE	CP #19 - CP SPIKE	CP #22 - CP SPIKE
N: 379169.026	N: 378727.081	N: 378927.144	N: 378689.730	N: 378138.212
E: 582088.972	E: 582143.708	E: 581630.457	E: 583049.114	E: 582979.949
Z: 864.664	Z: 873.817	Z: 870.343	Z: 897.276	Z: 887.414
CP #10 - CP SPIKE	CP #13 - CP MAG	CP #17 - CP SPIKE	CP #20 - CP SPIKE	CP #23 - CP SPIKE
N: 379003.98	N: 379083.665	N: 379281.123	N: 378437.435	N: 378310.495
E: 581382.071	E: 582861.619	E: 582622.985	E: 583343.286	E: 582777.641
Z: 860.830	Z: 876.813	Z: 869.597	Z: 892.780	Z: 886.383

BENCH MARK

- ELEVATIONS BASED ON NAVD 88 USING WISGEOID 12A:
- BENCHMARK #1**
BURY BOLT ON HYDRANT LOCATED NORTH OF JUNIOR/SENIOR HIGH SCHOOL BUILDING AND SOUTH OF SOUTH BACK OF CURB BY ADMINISTRATION PARKING LOT
ELEVATION: 871.95'
 - BENCHMARK #2**
BURY BOLT ON HYDRANT LOCATED SOUTHWESTERLY OF THE FAR SOUTHWEST UNOCCUPIED BUILDING CORNER.
ELEVATION: 887.99'
 - BENCHMARK #3**
BURY BOLT ON HYDRANT LOCATED BY EAST BACK OF CURB OF SCHOOL DRIVEWAY AND THE WEST DOWNSLOPE FROM YOUTH SOFTBALL DIAMOND.
ELEVATION: 873.11'
 - BENCHMARK #4**
NORTH BOLT ARROWHEAD ON HYDRANT LOCATED SOUTHWEST OF STAIRWELL TO JUNIOR/SENIOR HIGH SCHOOL BUILDING BASEMENT.
ELEVATION: 870.53'
 - BENCHMARK #5**
BURY BOLT ON HYDRANT LOCATED OFF NORTH BACK OF CURB OF 4TH STREET AND NORTH OF RETENTION POND IN FRONT OF JUNIOR/SENIOR HIGH SCHOOL BUILDING.
ELEVATION: 853.02'
 - BENCHMARK #6**
BURY BOLT ON HYDRANT LOCATED BY NORTHWEST CORNER OF SIDEWALK RAMP AND SOUTHWEST CORNER OF 4TH AND BEECH STREET INTERSECTION.
ELEVATION: 871.75'
 - BENCHMARK #7**
BURY BOLT ON HYDRANT LOCATED OFF EAST BACK OF CURB OF BEECH STREET AND NORTH OF NORTHERNMOST ELEMENTARY SCHOOL ASPHALT DRIVEWAY.
ELEVATION: 884.80'
 - BENCHMARK #8**
BURY BOLT ON HYDRANT LOCATED OFF EAST BACK OF CURB OF BEECH STREET AND SOUTHWEST CORNER OF MAIN ELEMENTARY SCHOOL ASPHALT PARKING LOT.
ELEVATION: 887.46'
 - BENCHMARK #9**
BURY BOLT ON HYDRANT LOCATED OFF NORTH EDGE OF ASPHALT SURFACE AND NORTHERLY OF NORTH ELEMENTARY SCHOOL BUILDING FACE.
ELEVATION: 887.08'
 - BENCHMARK #10**
BURY BOLT ON HYDRANT LOCATED NORTHERLY OF ELEMENTARY SCHOOL PLAYGROUND AREA.
ELEVATION: 887.80'
 - BENCHMARK #11**
BURY BOLT ON HYDRANT LOCATED SOUTH OF GRAVEL WALKING PATH AND SOUTH OF ELEMENTARY SCHOOL OFF EAST BACK OF CURB OF BEECH STREET.
ELEVATION: 884.77'

UNDERGROUND UTILITIES

THESE RECORD DRAWINGS HAVE BEEN PREPARED IN PART, ON THE BASIS OF INFORMATION COMPILED AND FURNISHED BY OTHERS. THE SURVEYOR AND ARCHITECT WILL NOT BE HELD RESPONSIBLE FOR ANY ERRORS OR OMISSIONS WHICH HAVE BEEN INCORPORATED INTO THIS DOCUMENT AS A RESULT.

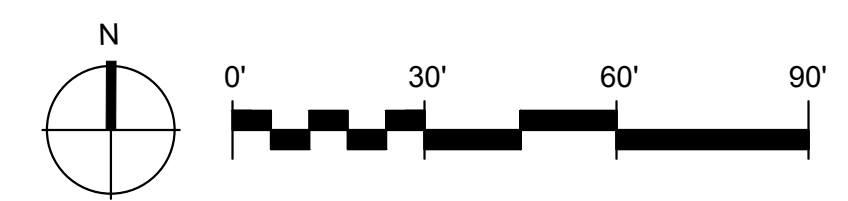
PRIVATE UTILITIES HAVE BEEN LOCATED BY PRIVATE LINES, INC.

FIELD VERIFY SANITARY AND STORM SEWER PIPE SIZES AND THEIR LOCATIONS.

UNDERGROUND UTILITIES SHOWN ON THIS MAP ARE BASED IN PART ON MARKINGS BY DIGGERS HOTLINE. (TICKET #20184501004, #20184501027, #20184501073, #20184501110, #20184501134, #20184501187, #20184501200.)

DESCRIPTION

PART OF THE NORTHEAST QUARTER OF THE NORTHWEST QUARTER AND PART OF THE NORTHWEST QUARTER OF THE NORTHEAST QUARTER OF SECTION 22, TOWNSHIP 23 NORTH, RANGE 13 EAST, CITY OF MANAWA, WAUPACA COUNTY, WISCONSIN.

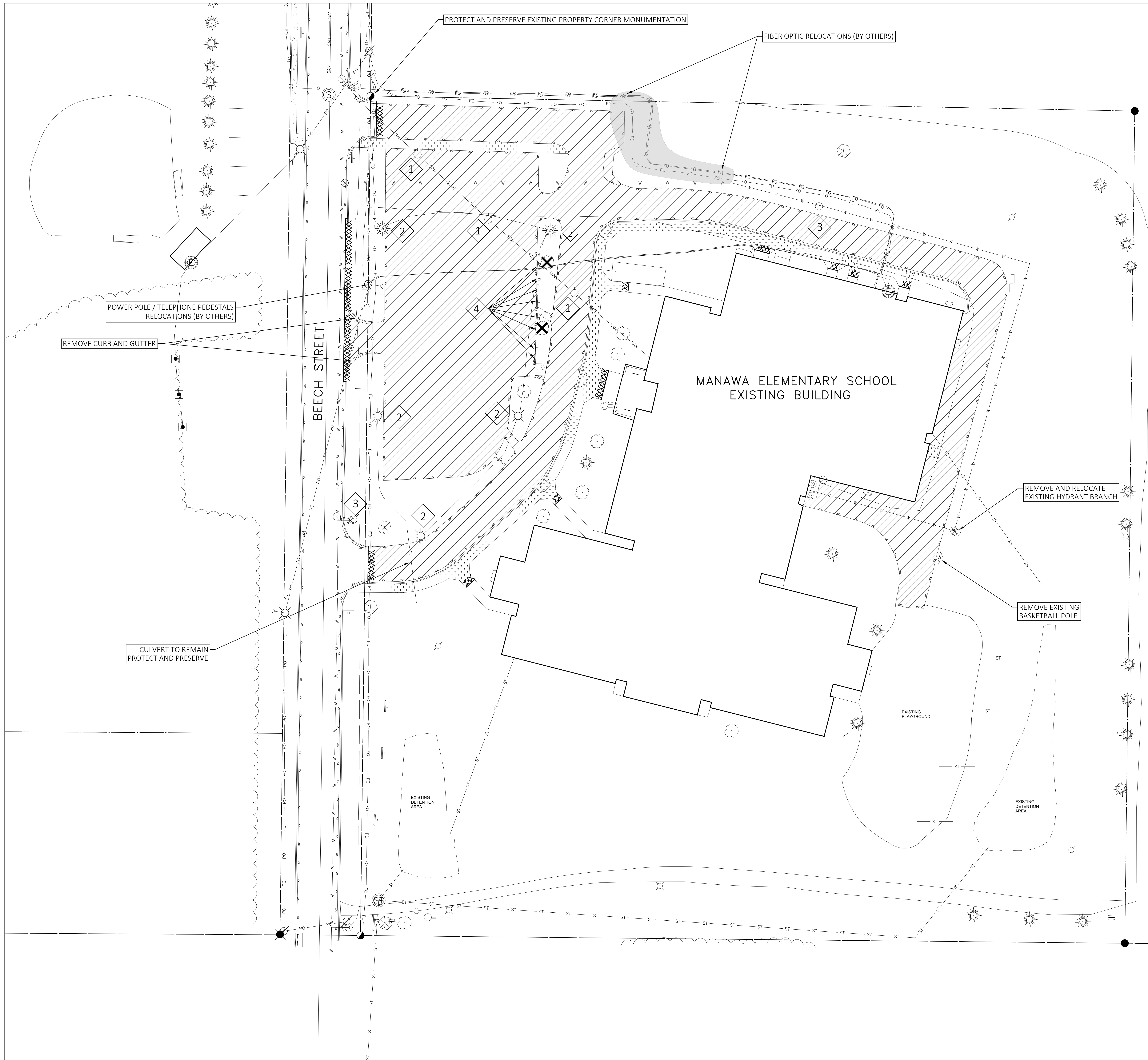


MARK	DATE
ISSUED:	3-27-19
PROJECT NO:	18268
CAD DWG FILE:	
DRAWN BY:	RETLER
CHECKED BY:	RETLER
COPYRIGHT © 2018	HOFFMAN PLANNING, DESIGN & CONSTRUCTION, INC.
SHEET TITLE:	

EXISTING CONDITIONS SURVEY

SHEET NUMBER:

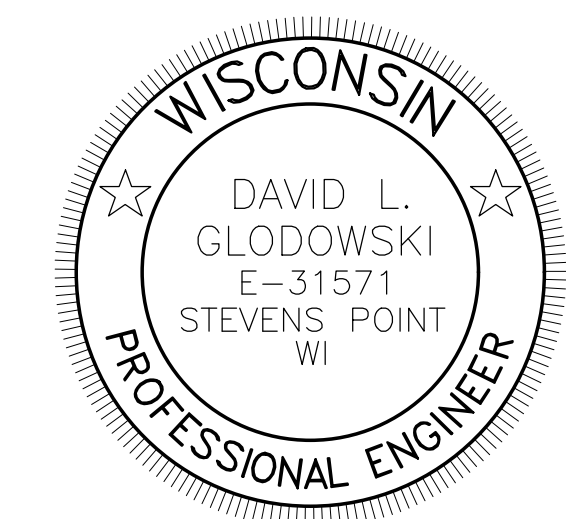
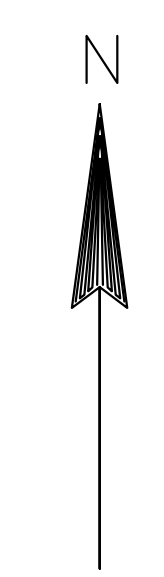
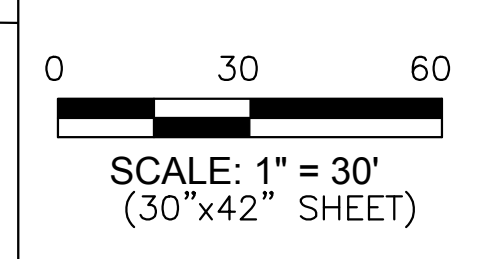
C-100



- DEMOLITION NOTES:**
- A. ALL FIELD SURVEY, UTILITY, AND BASEMAPING DATA PROVIDED BY OTHERS. GREMMER & ASSOCIATES IS NOT RESPONSIBLE FOR THE ACCURACY OR COMPLETENESS OF THIS DATA. SEE EXISTING CONDITIONS SURVEY FOR MORE INFORMATION.
 - B. CLEARING AND GRUBBING TO BE APPROVED BY HOFFMAN PRIOR TO REMOVAL.
 - C. SIDEWALK REMOVALS IN AREAS WHERE ADJACENT SIDEWALK WILL REMAIN SHALL BE TO THE NEAREST APPROPRIATE EXISTING JOINT. EXISTING CONCRETE SIDEWALK REMOVAL LIMITS SHALL BE REVIEWED AND APPROVED BY HOFFMAN PRIOR TO ANY REMOVALS. CONTRACTOR SHALL PROTECT AND PRESERVE ALL CONCRETE AREAS REMAINING.
 - D. PROTECT AND PRESERVE EXISTING TREES TO REMAIN.
 - E. SEE GEOTECHNICAL ENGINEERING SERVICES REPORT FOR EXISTING PAVEMENT AND BASE THICKNESSES.
 - F. REMOVE EXISTING BASE BENEATH PAVEMENTS AS REQUIRED TO INSTALL PROPOSED PAVEMENT STRUCTURE AND GRADE SUBGRADE.

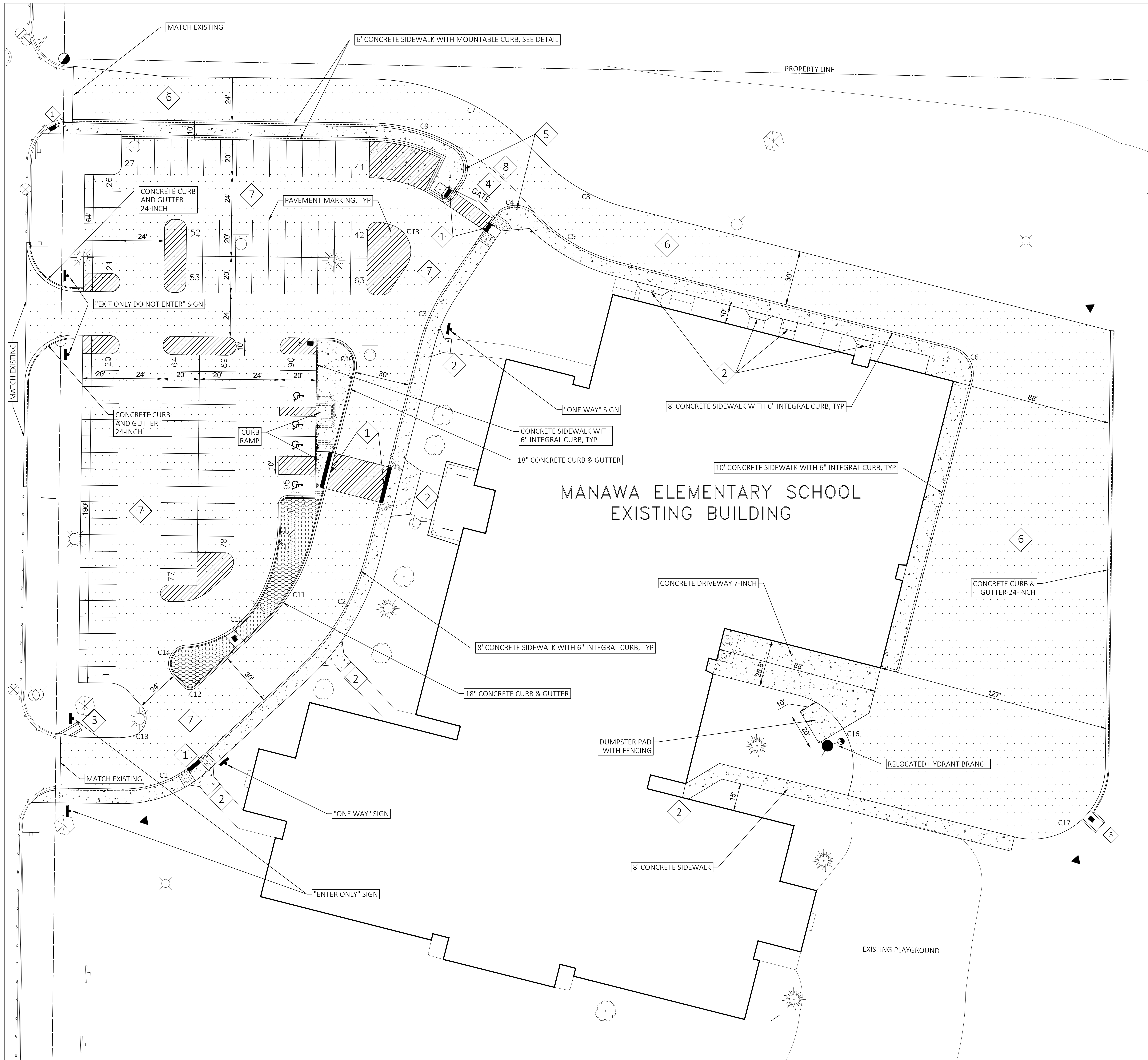
- LEGEND (DEMO PLAN):**
- SAWCUT
 - REMOVE ASPHALTIC PAVEMENT
 - REMOVE CONCRETE PAVEMENT
 - CLEARING AND GRUBBING

- KEYNOTES (DEMO PLAN):**
- ADJUST MANHOLES
 - LIGHTPOLE/BASE TO REMAIN
 - HYDRANT TO REMAIN
 - REMOVE EXISTING SIGN



3/14/2019 *Paul M. Hoffman*

MARK	DATE
ISSUED:	3-27-19
PROJECT NO:	18268
CAD DWG FILE:	
DRAWN BY:	DLG
CHECKED BY:	DDK
<small>COPYRIGHT © 2018 HOFFMAN PLANNING, DESIGN & CONSTRUCTION, INC.</small>	
SHEET TITLE:	
SITE DEMOLITION PLAN	
SHEET NUMBER:	
C-101	



- SITE NOTES:**
- ALL FIELD SURVEY, UTILITY, AND BASEMAPPING DATA PROVIDED BY OTHERS. GREMMER & ASSOCIATES IS NOT RESPONSIBLE FOR THE ACCURACY OR COMPLETENESS OF THIS DATA. SEE EXISTING CONDITIONS SURVEY FOR MORE INFORMATION.
 - ALL STANDARD PARKING LOT STALLS ARE 9' WIDE BY 20' LONG UNLESS NOTED OTHERWISE.
 - ADA ACCESSIBLE STALLS ARE UNIVERSAL, 11' WIDE / 20' LONG WITH 5' WIDE MIN / 20' LONG LOADING AREA ADJACENT TO ONE SIDE AND WITH SIGNAGE.
 - ALL WORK PERFORMED WITHIN THE RIGHT-OF-WAY SHALL CONFORM TO CITY OF MANAWA REQUIREMENTS.
 - ALL RADII DIMENSIONS TO EDGE OF PAVEMENT
 - CONCRETE SIDEWALK SHALL BE 6" THICK IN CURB RAMP / ADA DETECTABLE WARNING FIELDS AREAS.
 - SEE DETAILS FOR ALL CURVE RADII / DATA
 - SEE DETAILS FOR PAVEMENT STRUCTURES
 - DUMPSTER PAD AREA TO INCLUDE CHAIN LINK (SCREENED) FENCING

- LEGEND (SITE PLAN):**
- ASPHALT PAVEMENT
 - 4" CONCRETE SIDEWALK (UNLESS NOTED OTHERWISE)
 - LANDSCAPING / CLEARSTONE AREA
 - PROPOSED SIGN
 - PROPOSED STORM SEWER INLET
 - PROPOSED STORM SEWER APRON ENDWALL

- KEYNOTES (SITE PLAN):**
- CURB RAMP WITH ADA DETECTABLE WARNING FIELDS
 - MATCH EXISTING CONCRETE SIDEWALK
 - ASPHALTIC FLUME, SEE DETAILS
 - TRAFFIC CONTROL GATE
 - POSTS FOR GATE STOP
 - BUS ROUTE / LOOP PAVEMENT STRUCTURE SEE DETAILS
 - PARKING / PARENT DROP-OFF LOOP PAVEMENT STRUCTURE. SEE DETAILS
 - TRANSITION AREA FOR BUS LOOP / PARKING AREA PAVEMENT STRUCTURE

0 30 60
SCALE: 1" = 30'
(30"x42" SHEET)

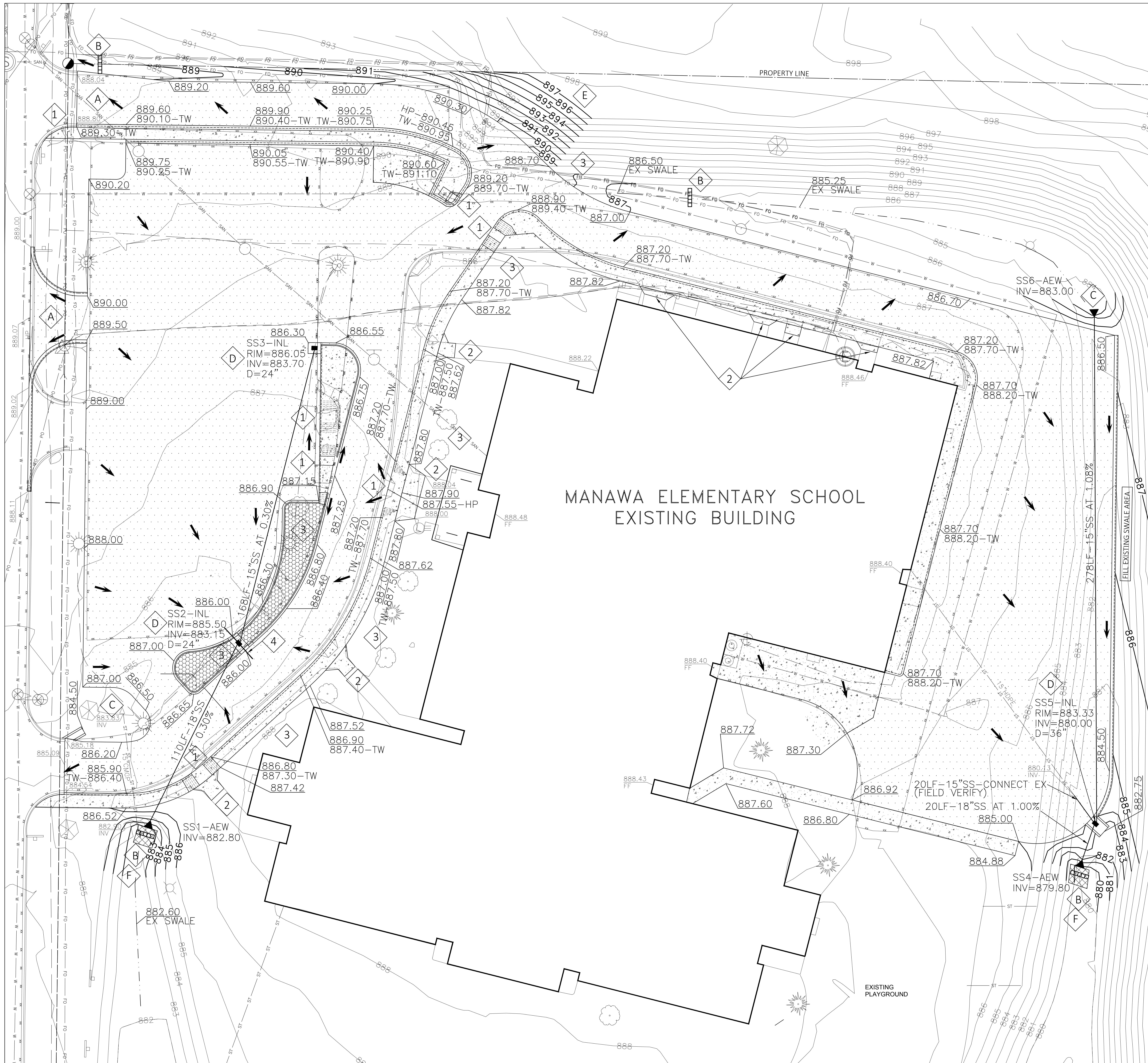
N

WISCONSIN
DAVID L. GLODOWSKI
E-31571
STEVENS POINT
WI
PROFESSIONAL ENGINEER

3/14/2019

Paul M. Glodowski

MARK	DATE
ISSUED:	3-27-19
PROJECT NO:	18268
CAD DWG FILE:	
DRAWN BY:	DLG
CHECKED BY:	DDK
COPYRIGHT © 2018	HOFFMAN PLANNING DESIGN & CONSTRUCTION, INC.
SHEET TITLE:	SITE LAYOUT
SHEET NUMBER:	C-102



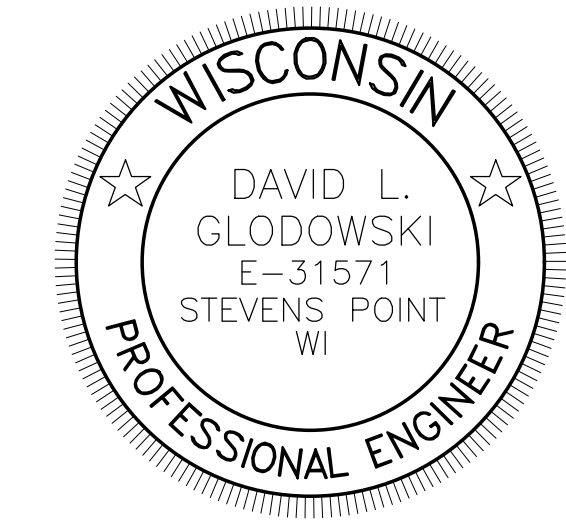
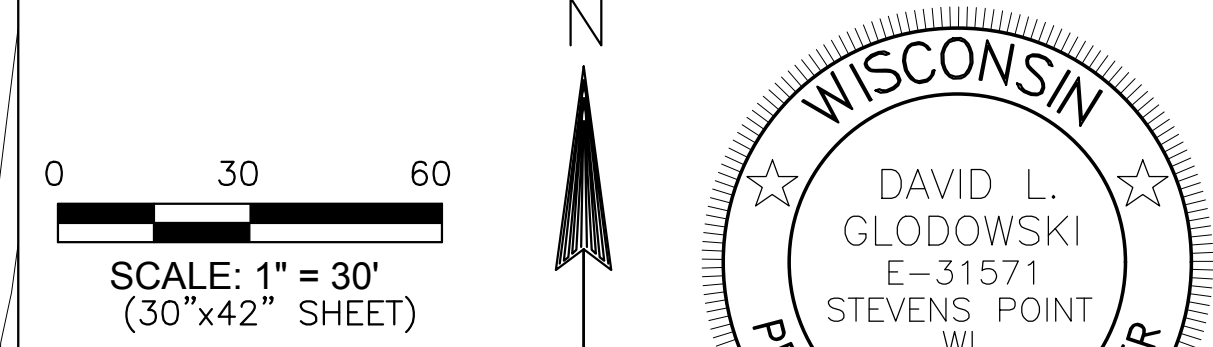
- GRADING NOTES:**
- A. ALL FIELD SURVEY, UTILITY, AND BASEMAPING DATA PROVIDED BY OTHERS. GREMMER & ASSOCIATES IS NOT RESPONSIBLE FOR THE ACCURACY OR COMPLETENESS OF THIS DATA. SEE EXISTING CONDITIONS SURVEY FOR MORE INFORMATION.
 - B. ALL GRASS SLOPES ARE 4:1 OR FLATTER, UNLESS NOTED.
 - C. CONTACT DIGGERS BEFORE EXCAVATING (811 OR 1-800-242-8511).
 - D. ALL SPOT ELEVATIONS ARE TO FINISHED GRADE
 - E. ALL PROPOSED SIDEWALK SHALL HAVE A 1.5% CROSS SLOPE, TYP.
 - F. ALL WORK PERFORMED WITHIN THE RIGHT-OF-WAY SHALL CONFORM TO CITY OF MANAWA REQUIREMENTS

- LEGEND (GRADING PLAN):**
- 889.60 PROPOSED SPOT ELEVATION
 - 890- PROPOSED CONTOUR
 - PROPOSED STORM SEWER INLET
 - ▲ PROPOSED STORM SEWER APRON ENDWALL
 - ➔ DRAINAGE FLOW DIRECTION

- ABBREVIATIONS:**
- AEW APRON ENDWALL
 - D DEPTH
 - EX EXISTING
 - FF FIRST FLOOR
 - HP HIGH POINT
 - INL INLET
 - LF LINEAR FEET
 - RIM TOP OF INLET CASTING
 - SS STORM SEWER
 - TW TOP OF SIDEWALK

- KEYNOTES (GRADING PLAN):**
- 1 CURB RAMP REQUIRED
 - 2 MATCH EXISTING SIDEWALK
 - 3 GRADE LAWN AREA TO DRAIN
 - 4 4" UNDERDRAIN. SEE DETAILS

- EROSION CONTROL NOTES / KEYNOTES:**
- A. ALL EROSION CONTROL ITEMS SHALL BE INSTALLED IN ACCORDANCE WITH WDMR - TECHNICAL STANDARDS. ALL EROSION CONTROL MATERIALS SHALL BE ON WDOT PAL LIST.
 - A INSTALL AND MAINTAIN TRACKING PAD (50'x24'x12" THICK, MIN)
 - B TEMPORARY DITCH CHECK
 - C CULVERT PIPE CHECK
 - D INLET PROTECTION TYPE B
 - E EROSION MAT CLASS I TYPE A ON SLOPES STEEPER THAN 4:1
 - F EROSION MAT CLASS I TYPE B
 - B. ALL AREAS DISTURBED BY CONSTRUCTION AND OUTSIDE PROPOSED PAVEMENT AREAS SHALL RECEIVE 6" TOPSOIL, SEED, FERTILIZER, AND MULCH.
 - C. ANY SEDIMENTS FROM EROSION OR TRACKING THAT ENTERS PROPERTY NOT OWNED BY THE PROJECT OWNER SHALL BE COMPLETELY REMOVED/CLEANED UP WITHIN 24 HOURS OF THE OCCURRENCE.
 - D. STOCKPILES SHALL BE LOCATED WITHIN THE SITE TO PREVENT ANY EROSION OR SEDIMENTS LEAVING THE PROPERTY.



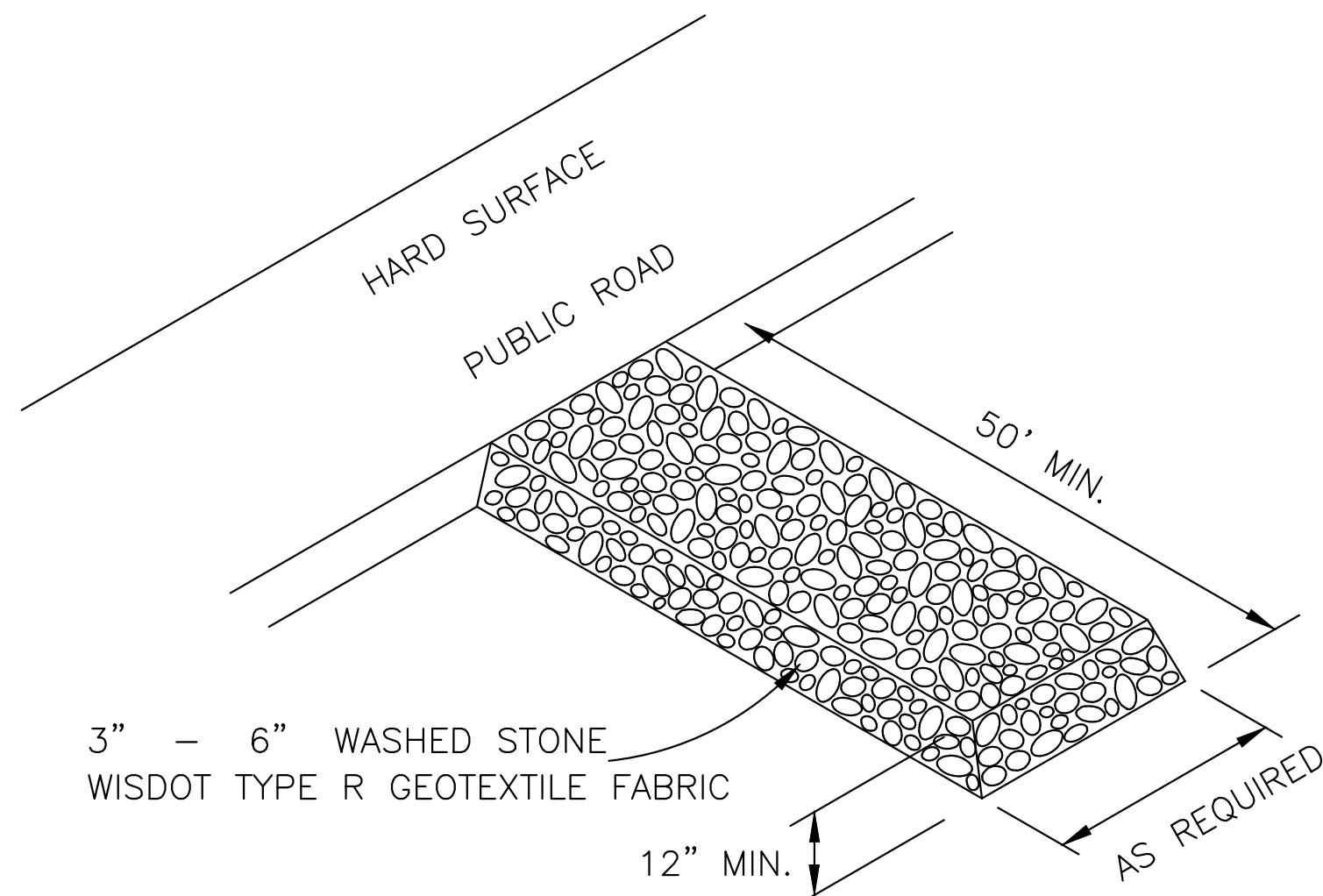
3/14/2019 *Paul M. Glodowski*



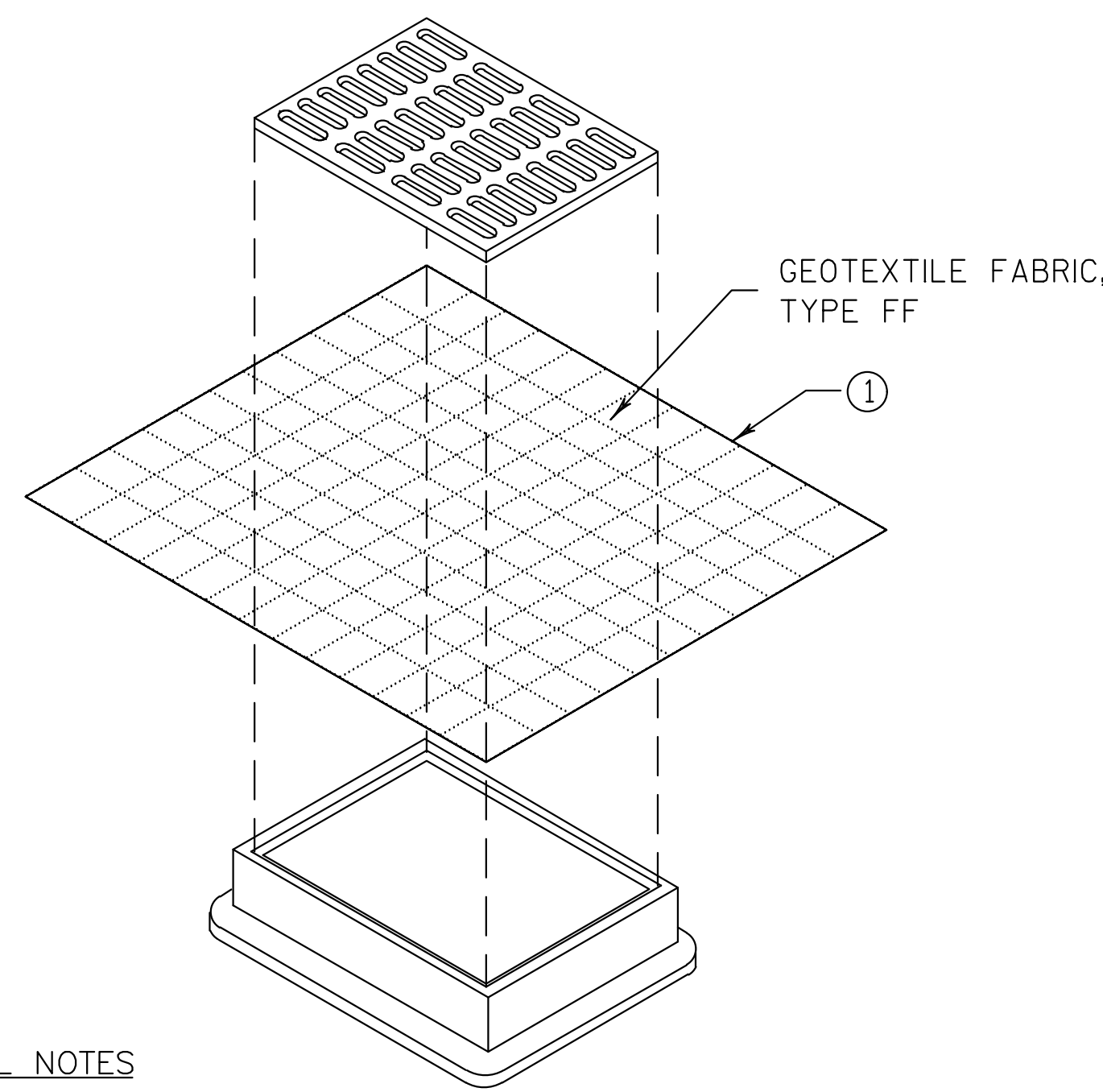
MARK	DATE
ISSUED:	3-27-19
PROJECT NO:	18268
CAD DWG FILE:	
DRAWN BY:	DLG
CHECKED BY:	DDK
COPYRIGHT © 2018	HOFFMAN PLANNING DESIGN & CONSTRUCTION, INC.
SHEET TITLE:	SITE GRADING / DRAINAGE / EROSION CONTROL PLAN
SHEET NUMBER:	C-103

NOTES:

1. VEHICLE TRACKING PAD SHALL BE LOCATED AT EVERY ENTRANCE/EXIT TO THE CONSTRUCTION SITE.
2. VEHICLE TRACKING MAT SHALL BE MAINTAINED AS NEEDED TO PREVENT ANY MATERIAL FROM BEING TRACKED ONTO CITY STREET.
3. SEDIMENT AND OTHER MATERIAL SPILLED, DROPPED OR TRACKED ONTO CITY STREET SHALL BE IMMEDIATELY REMOVED.



TRACKING PAD DETAIL

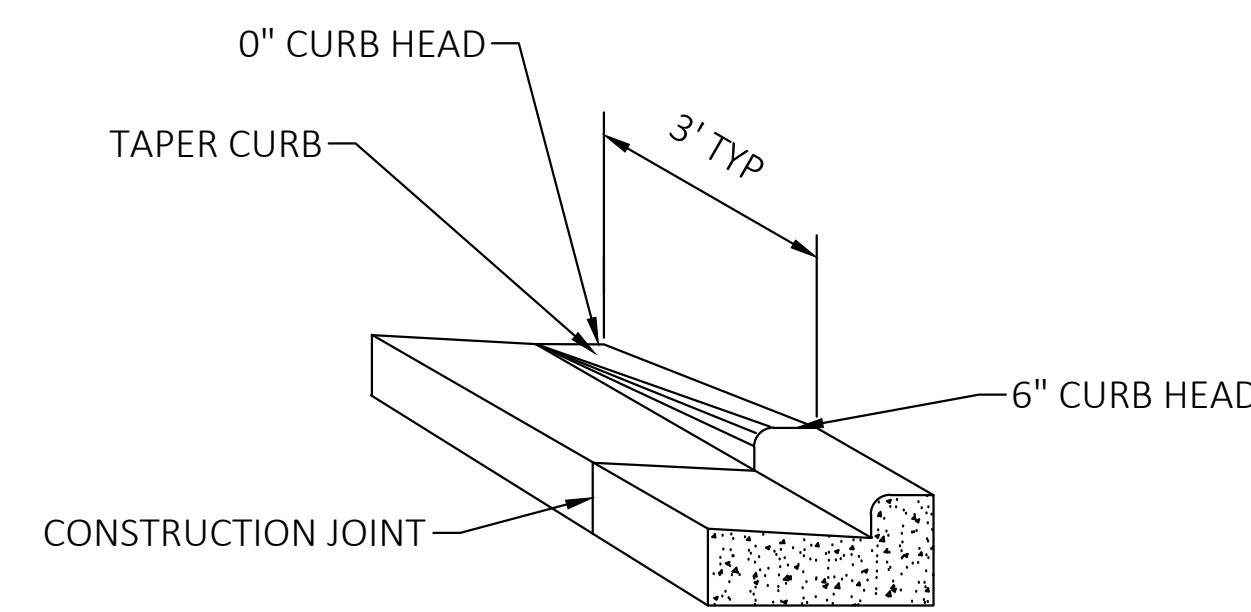


GENERAL NOTES

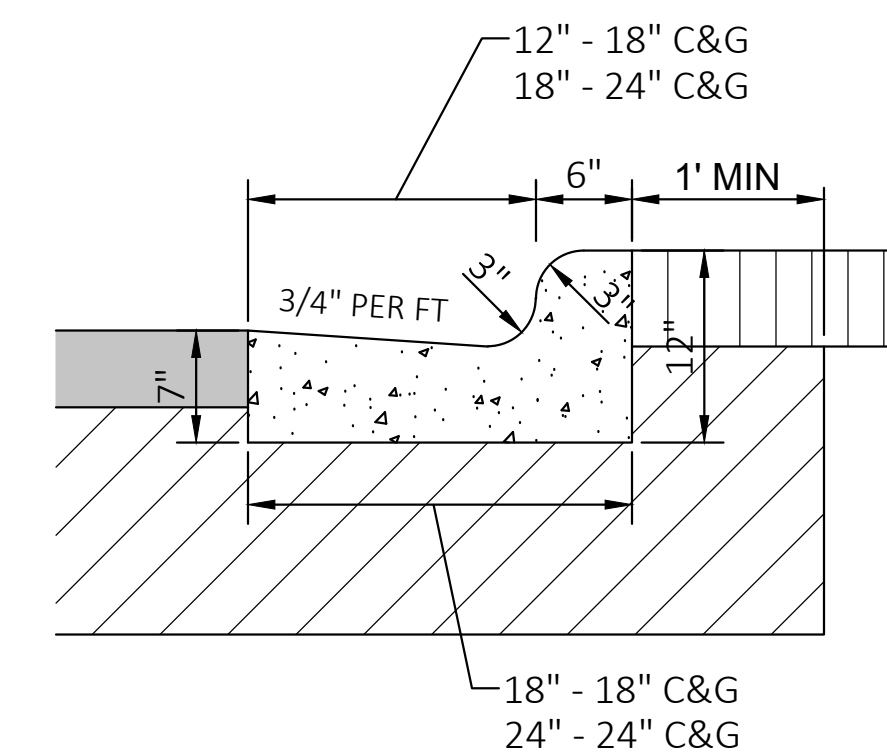
MANUFACTURED ALTERNATIVES APPROVED AND LISTED ON WISDOT'S EROSION CONTROL PRODUCT ACCEPTABILITY LIST MAY BE SUBSTITUTED.
WHEN REMOVING OR MAINTAINING INLET PROTECTION, CARE SHALL BE TAKEN SO THAT THE SEDIMENT TRAPPED ON THE GEOTEXTILE FABRIC DOES NOT FALL INTO THE INLET. ANY MATERIAL FALLING INTO THE INLET SHALL BE REMOVED IMMEDIATELY.

① FINISHED SIZE, INCLUDING FLAP POCKETS WHERE REQUIRED, SHALL EXTEND A MINIMUM OF 10" AROUND THE PERIMETER TO FACILITATE MAINTENANCE OR REMOVAL.

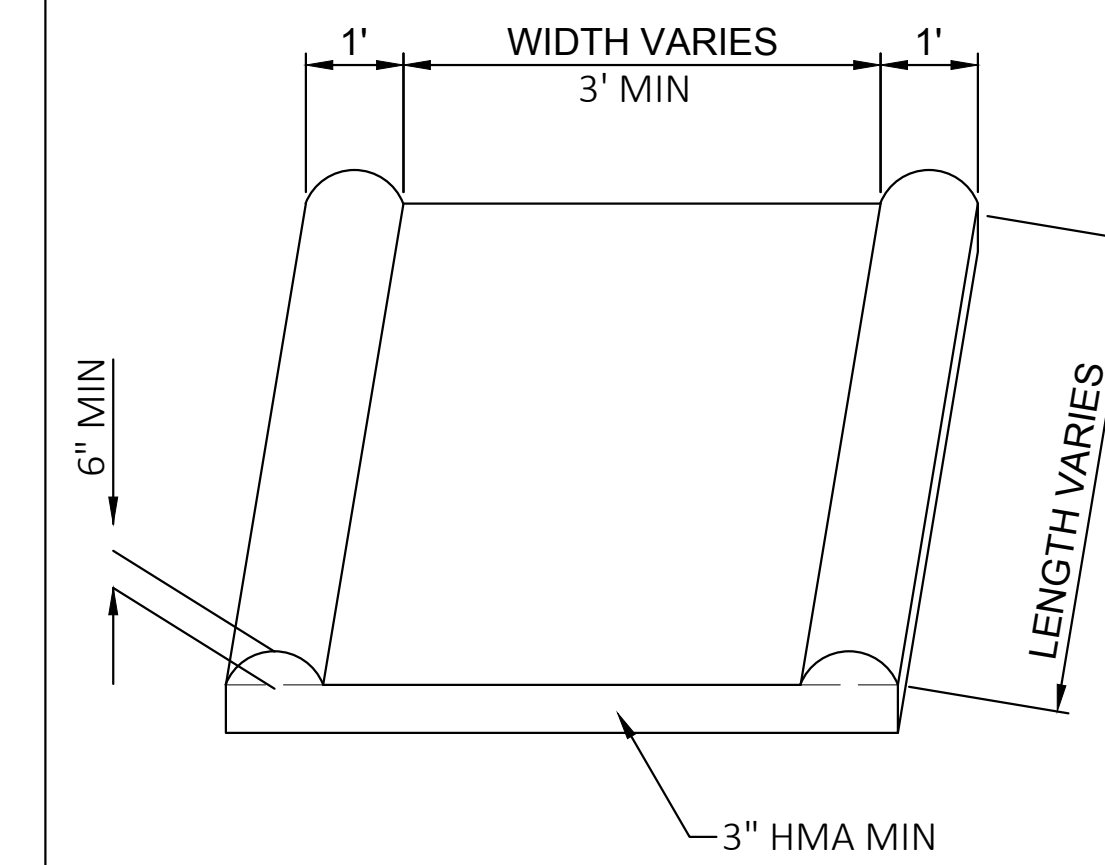
INLET PROTECTION, TYPE B DETAIL



TAPER SECTION



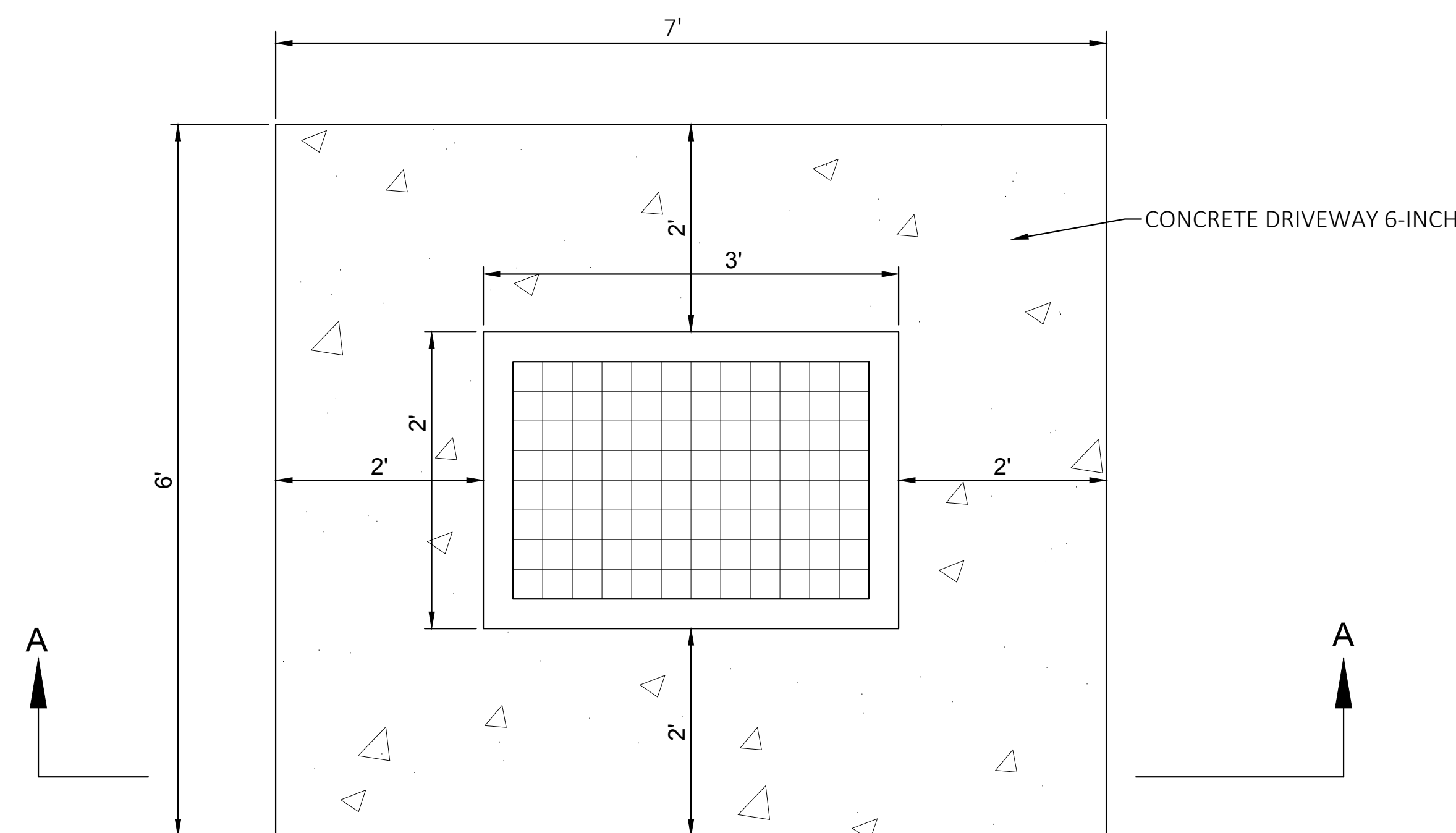
CONCRETE CURB & GUTTER DETAIL



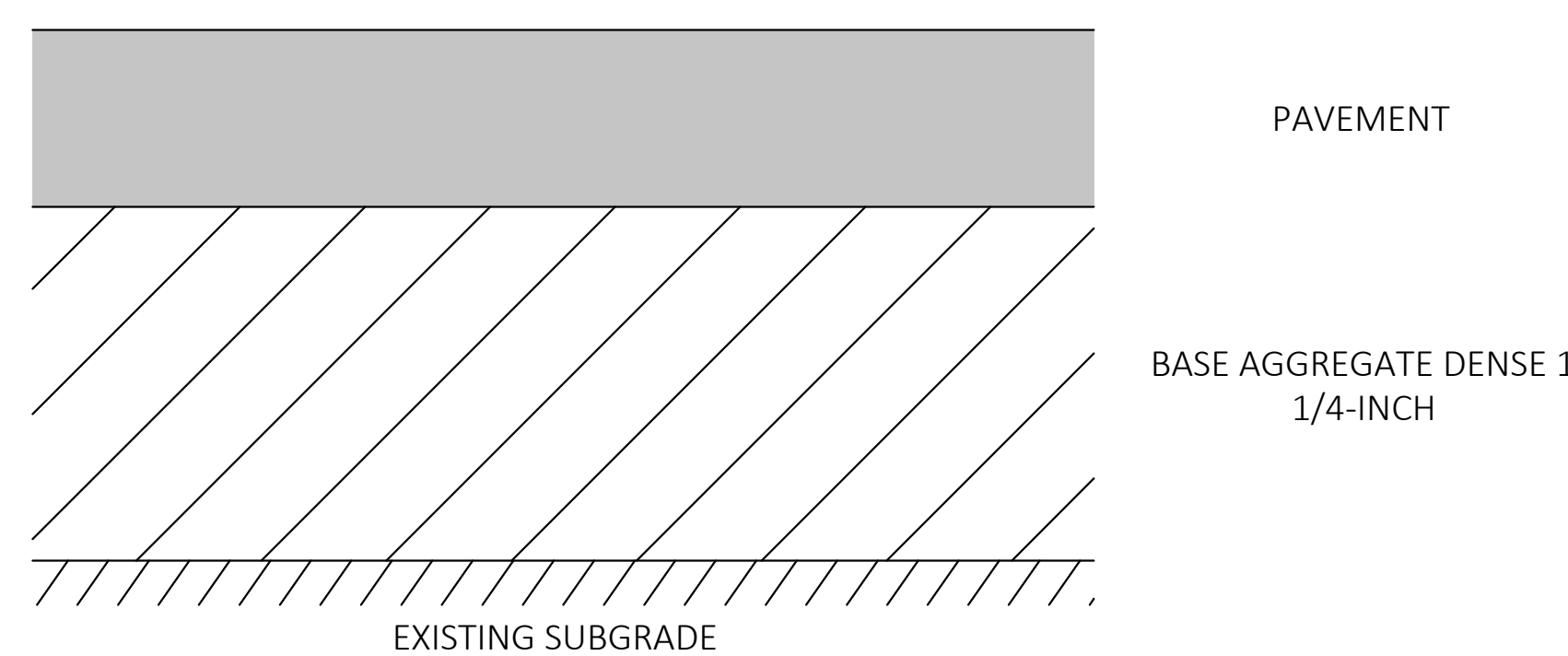
ASPHALTIC FLUME DETAIL

CURVE LAYOUT DATA			
CURVE #	RADIUS	NORTHING	EASTING
C1	60	378380.27	582761.56
C2	130	378481.14	582768.24
C3	100	378538.63	583020.23
C4	15	378624.44	582975.86
C5	98	378703.30	583056.79
C6	15	378547.39	583211.22
C7	124	378584.54	582894.98
C8	98	378733.35	583060.35
C9	100	378584.54	582894.98
C10	15	378551.79	582873.95
C11	100	378481.14	582768.24
C12	5	378379.58	582797.88
C13	10	378358.95	582763.91
C14	10	378388.90	582796.14
C16	40	378467.06	582756.02
C17	40	378332.84	583258.40
C18	15	378614.31	582903.60

CURVE LAYOUT DATA



PLAN VIEW SECTION A/A



-EXCAVATION BELOW SUBGRADE MAY BE REQUIRED, SEE GEOTECHNICAL ENGINEERING SERVICES REPORT

PAVEMENT AREA

PARKING / PARENT DROP-OFF LOOP

PAVEMENT STRUCTURE*

- 3.5" HMA PAVEMENT
 - 1.75" UPPER LAYER 4LT58-28S (12.5 MM)
 - 1.75" LOWER LAYER 4LT58-28S (12.5MM)
- 10" BASE AGGREGATE DENSE 1 1/4-INCH

BUS ROUTE / LOOP

- 5" HMA PAVEMENT
 - 2" UPPER LAYER 4MT58-28S (12.5 MM)
 - 3" LOWER LAYER 2MT28-28S (25.0 MM)
- 12" BASE AGGREGATE DENSE 1 1/4-INCH

CONCRETE DRIVEWAY

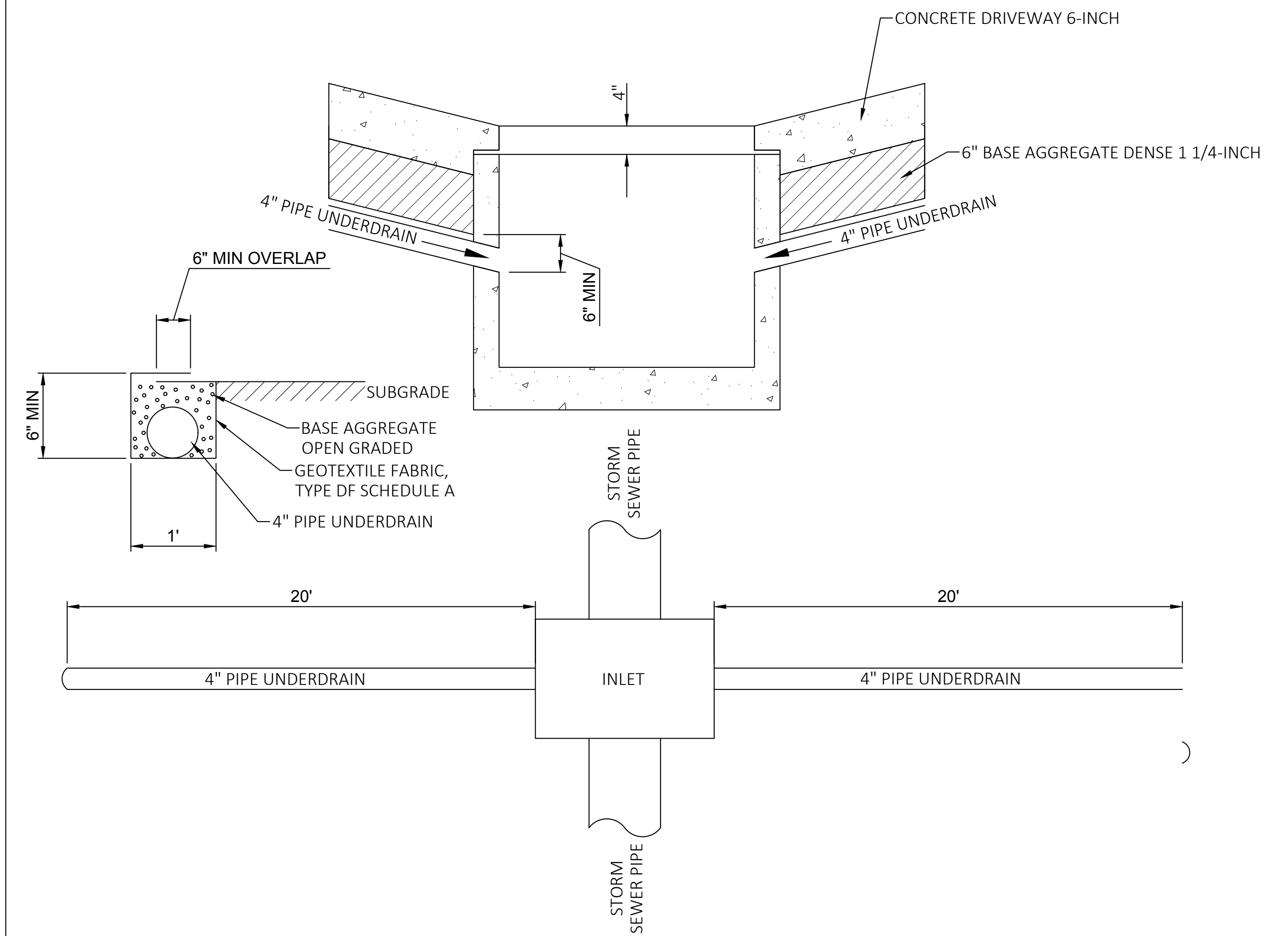
- 7" CONCRETE DRIVEWAY
- 6" BASE AGGREGATE DENSE 1 1/4-INCH

CONCRETE SIDEWALK

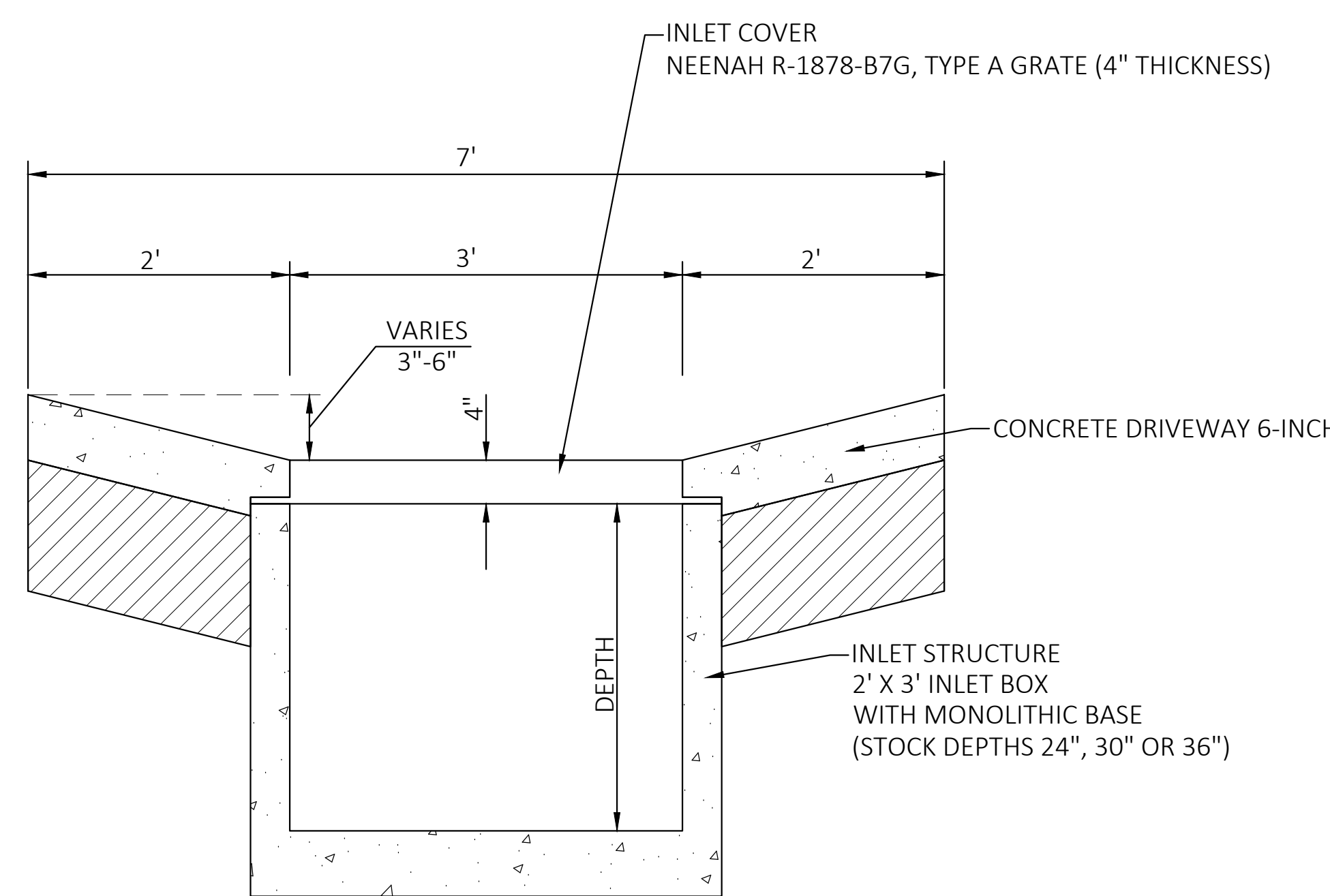
- 4" OR 6" CONCRETE SIDEWALK
- 6" BASE AGGREGATE DENSE 1 1/4-INCH

*PAVEMENT STRUCTURE DESIGN BY OTHERS. SEE GEOTECHNICAL ENGINEERING SERVICES REPORT (PSI REPORT NUMBER: 0094816-2)

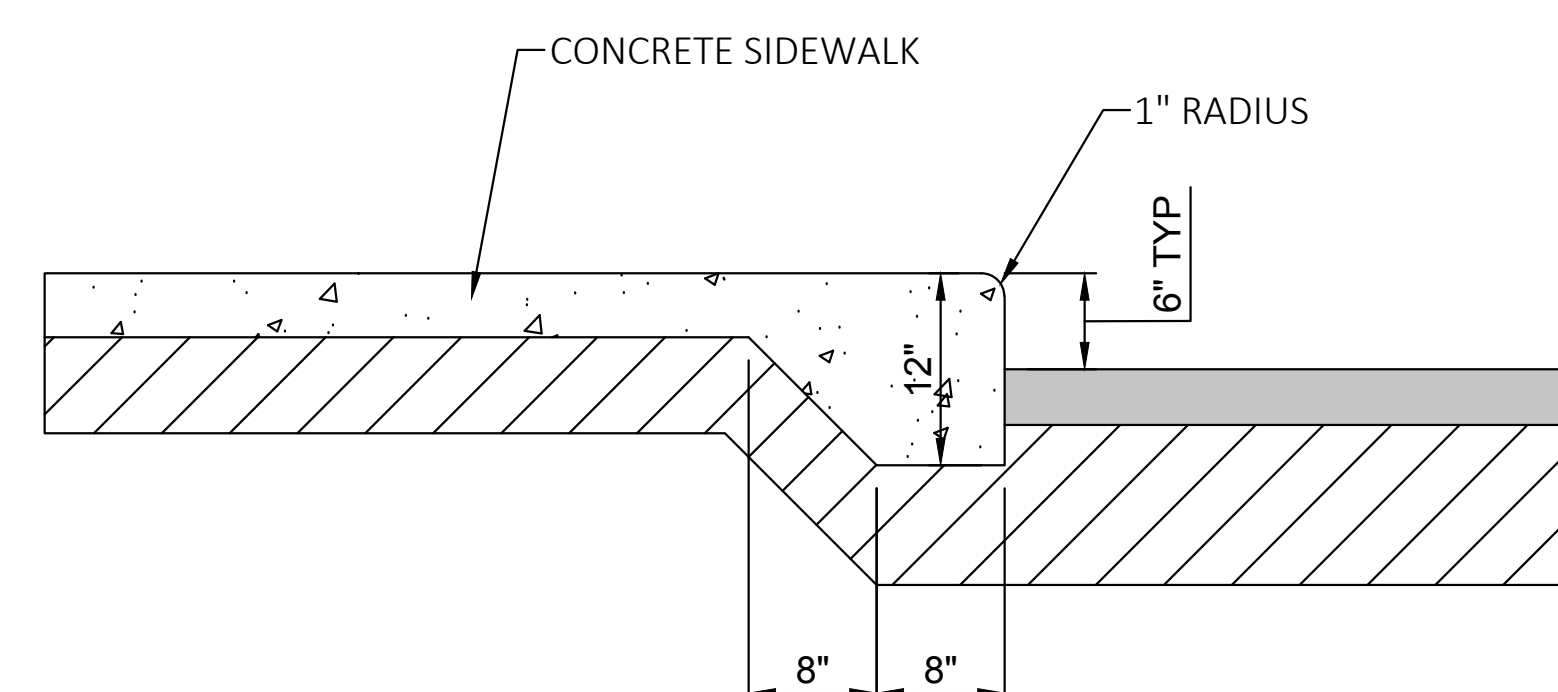
PAVEMENT STRUCTURES DETAIL



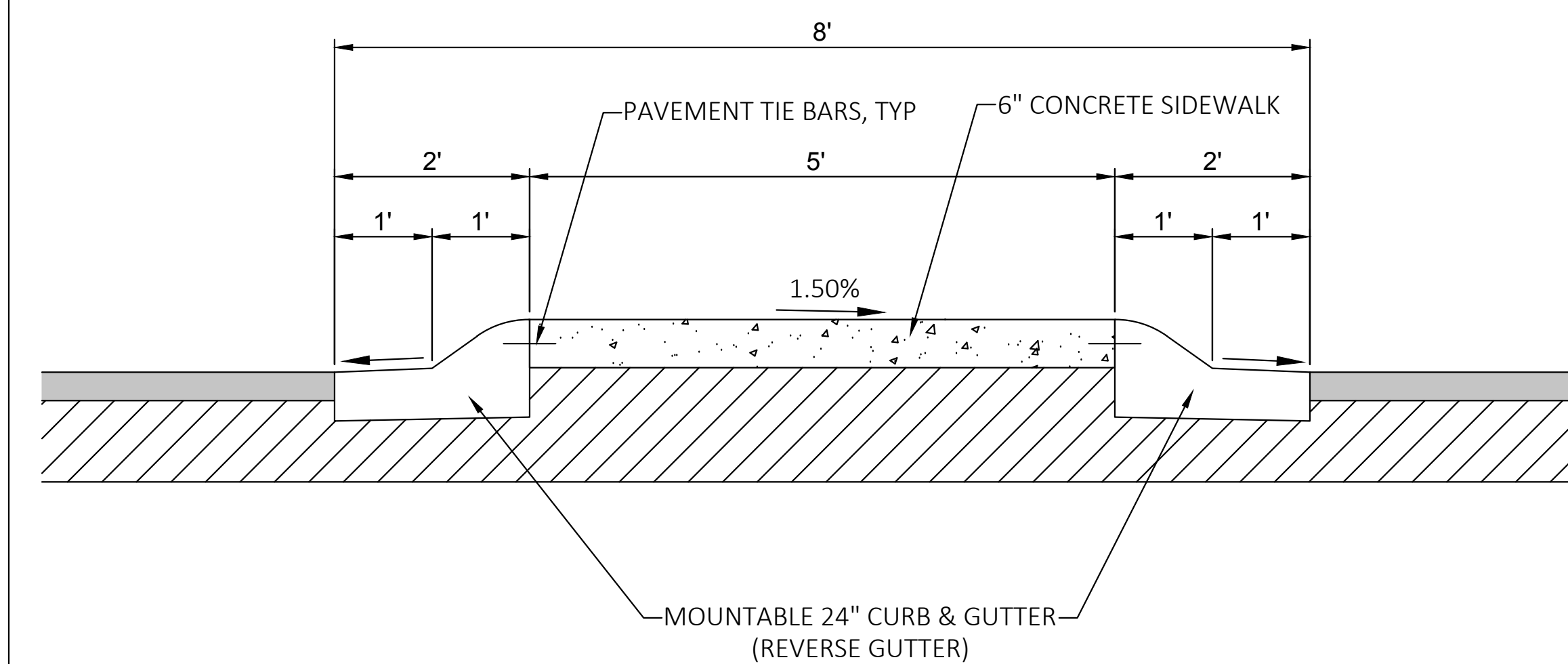
4" PIPE UNDERDRAIN DETAIL



STORM SEWER INLET / CONCRETE APRON DETAIL



SIDEWALK / INTEGRAL CURB DETAIL



MOUNTABLE CURB / SIDEWALK DETAIL



3/14/2019

Paul Molnar